

# Company **Profile**



# MUNDIAL ENGINEERING

*Committed to standards...Delivering solutions*



# Engineering Professionals.

(ENGINEERING CONSULTING, DESIGN, INSTALLATION & FACILITY MANAGEMENT)

[www.mundialengineering.com](http://www.mundialengineering.com)

# Who we are

MUNDIAL ENGINEERING is a broad spectra engineering solutions provider. We specialize in Engineering Consulting, Design, Installation facility management for industrial, commercial and residential facilities. We also carry out condition monitoring services using Thermal imaging cameras and power quality analysers.

We combine tested and trusted systems with current technology to ensure high-quality, cost-competitive services with total compliance to international standards from simple electrical cable terminations to the complex engineering projects.

Our clients are mainly industrial, commercial and private end-users in the food and beverage industry, oil and gas industry, Telecoms, Original equipment manufacturers (OEMs), Hotels, facility owners and architects.



## Our Vision

To become the most sought - after engineering services company in Nigeria



## Our mission

is to create distinctive value. We will succeed in business only by creating value for our clients, suppliers and employees, We will build stronger customer relations and create solutions: Explore, Discover, Create, Deliver



## Organizational Philosophy

Uncompromising reliability and adherence to international engineering standards, enabling our clients to optimize their operations/facilities and deliver their projects within budget, time and to the right standard.

# Our Strengths

At Mundial, we keep tabs on world engineering trends and utilize the best tools and resources (Human & Materials) to carry out tailor made projects designs and installations.



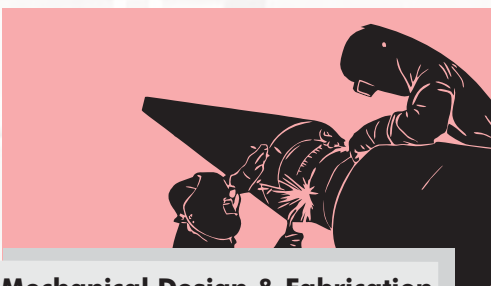
## Industrial Engineering Services

- Design, Assembly & Installation of power & control Panels
- Design & Installation of synchronization & power changeover panels
- Power factor correction
- Transformer Installation & Maintenance
- Generator Installation & Synchronization
- Installation of Variable Speed Drives
- Industrial cabling
- Control, Automation and Instrumentation
- General Earthing & lightning protection.

- Facility Plumbing maintenance
- Facility HVAC maintenance
- Facility Carpentry maintenance
- Masonry/ Tiling services
- Water treatment plant maintenance
- Waste treatment and management services
- Aluminium construction and repairs.
- Facility Electrical maintenance.



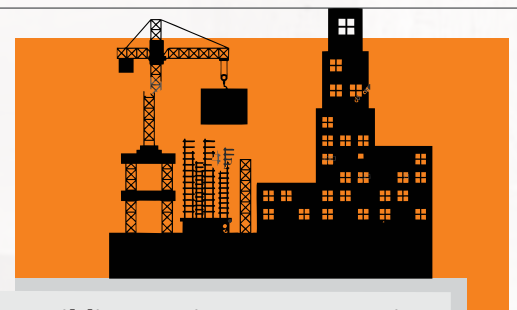
## Facility Management Services



## Mechanical Design & Fabrication

- Mechanical Engineering design and Blueprints
- Weld Fitting of machine parts. Parts of Machinery
- Machine/equipment Assembling
- Lifting and positioning of finished Products.
- Pigging
- Pressure testing
- Cladding & Insulation

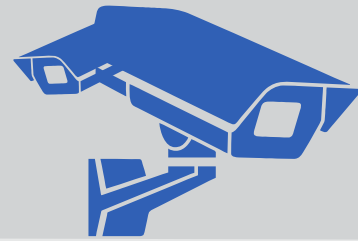
- Architectural work (including drafting and design)
- Assembly , installation or erection
- Concreting (including formwork, pouring and finishing)
- Earthworks, excavation, grading & foundation work
- Installation of septic tanks
- Landscaping construction (including paving and design)
- Painting (internal and external surfaces, including roofs)
- Plastering & rendering (or other internal or external surface finishes)



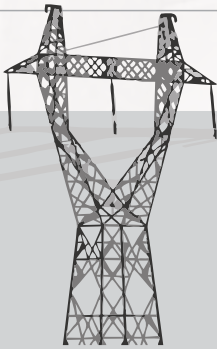
## Building Design & Construction



- Internet Protocol CCTV Installation
- Access control & Time attendance with IT options
- Burglar Alarm & Motion detection systems installation
- Electric Fencing, with IT options
- UPS & Inverters Solutions
- Network design, installation and management.



**Information Technology Services (ITS)**



**Rural Electrification & Green Energy**

- Concrete Pole/Pylon Mounting
- HT & LT Cable Stringing
- Installation of Power transformers & other substation auxiliaries.
- Installation of HVDS & LVDS transformers
- Street and facility lighting
- Installation of Solar systems.
- Underground services Route Survey
- Customer Load Schedule/ Profile

Through the expertise of our in-house technical project management team, made up of well trained and skilled technical designers, electrical/instrumentation consultants, project Managers and Facility managers. We provide strategic insight and useful know-how for the successful completion of various engineering installation and power projects in both private & public sector companies taking into consideration the peculiarities of each sector for proper project execution. We also, provide skilled technicians to assist local and foreign expatriates, during plant installation, plant upgrades, and overhauls, Labour intensive jobs etc.



**Project Planning, Design, Execution & Support**



**Condition Monitoring, Mechanical, Electrical & Plumbing Installation Audit**

- Infrared Thermography Services
- Risk Assessment & Valuation
- Power Quality Management & Solutions
- Earth-loop impedance resistance testing
- Load Study
- Power optimization, ariff Assessment & Energy Audits T
- Portable Appliance Testing.



## PARTICULARS OF FIRM

**OFFICIAL NAME OF FIRM:**

MUNDIAL ENGINEERING LIMITED

**REGISTERED:**

CORPORATE AFFAIRS COMMISSION

**REGISTRATION NO:**

RC 744666

**FOREIGN TECHNICAL PARTNERS:**

Boulting Group, United Kingdom  
Moonlighting LED Company

**PROFESSIONAL AFFILIATIONS:**

The Institution OF Engineering & Technology  
(IET) Business Partner

**GOVERNMENT LICENCE:**

Category A Wiring license by Federal  
Ministry of Power & Steel

**E-MAIL ADDRESS:**

info@mundialengineering.com

**OFFICE ADDRESS:**

13, Isaacstan Close, Off Wempco Road,  
Ikeja, Lagos.

Tel: +234 802 3358723, +2349093309139



## THE TEAM

**MANAGING DIRECTOR:**

- Ehi Izibili  
B.Sc. (Elect. Eng.), MBA  
(Lagos Business School)  
Managing Director

**ADMIN/LEGAL DIRECTOR:**

- Idor Izibili, LLb

**TECHNICAL MANAGER:**

- Ayobami Olabanji  
(MNSE, COREN, B.ENG)

**COMMERCIAL MANAGER**

- Samuel Ogugu B.Sc. Geophysics

**ADMIN & ACCOUNT MANAGER:**

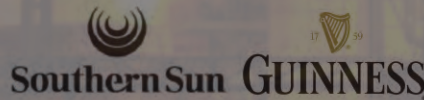
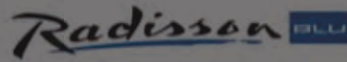
- Oluwabukola Sadiq B.Sc. Accounting

**ENGINEERING LEAD:**

- Nwobodo, Patrick O.  
B.Eng. Project Engineer
- Daramola, Kehinde J.  
HND, (Elect. Elect. Engr.) Project Engineer
- Agu, Princewill O.  
B.Eng. (Chem. Eng.) Project Engineer
- Samuel Arinze E.  
HND, Project Engineer.
- Samuel Ayankoya B Eng.  
(Elect. Engr.) Project Engineer.
- Damilola Ogunjobi B.Eng,  
(Elect. Engr.) Project Engineer.
- Moshood Afolayan HND,  
(Industrial Maintenance Engr.)  
Project Engineer.



# Satisfied Clients



Classic Beveraged Nigeria Ltd.



**MUNDIAL**  
**ENGINEERING**  
Committed to standards...Delivering solutions

13, Isaacstan Close  
Off Wempco Road, Ikeja, Lagos, Nigeria  
☎ +234.9093309139, +234.8023358723  
🌐 info@mundialengineering.com